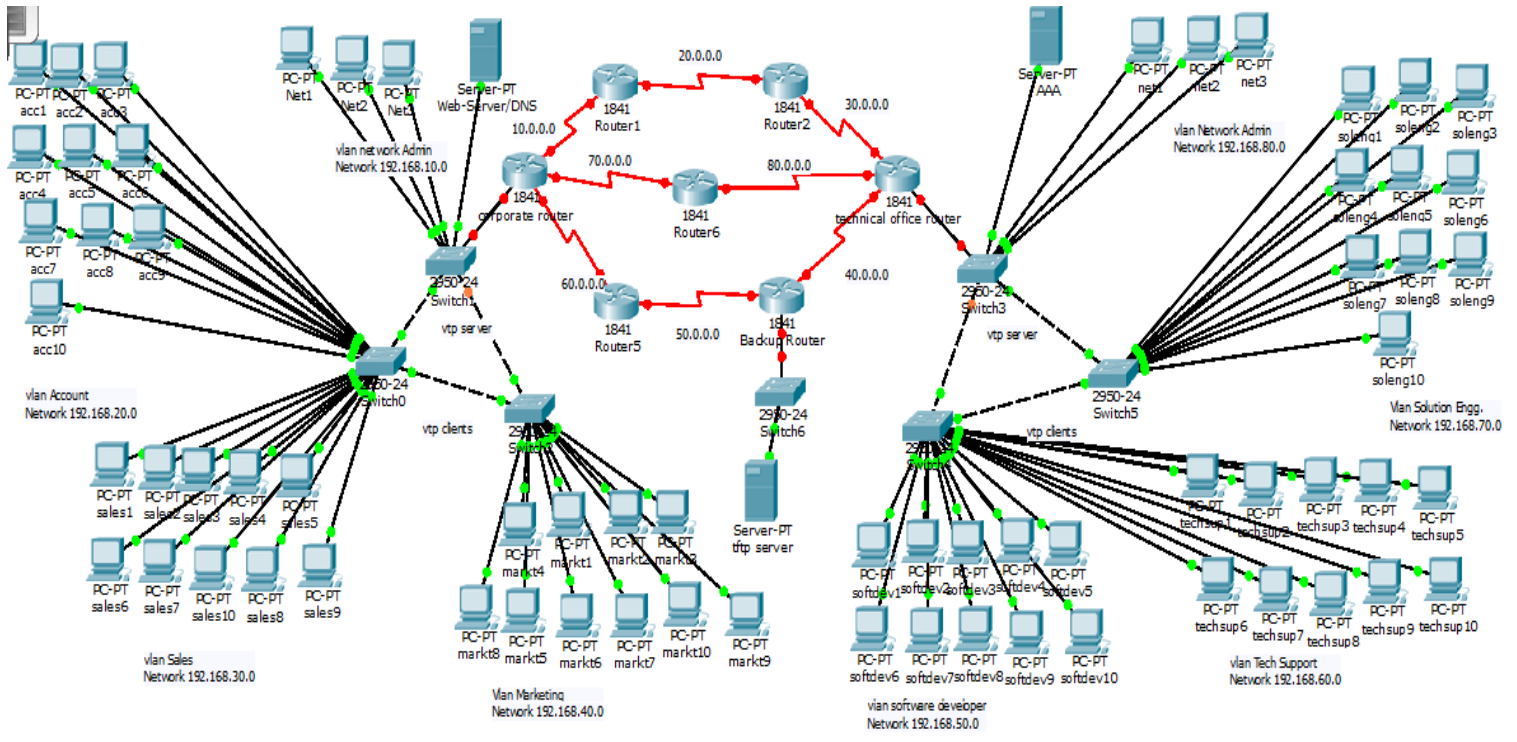


Design and Implement Corporate Network Infrastructure



RELEVANCE OF PROPOSED WORK

We have to design two offices network infrastructure corporate office and technical office.

Corporate Office Network:-

Switching:-

- VLAN
There are four vlans named Account, Sales, Marketing, Network Admin.
- STP
- VTP
- SwitchPort Security

Routing:-

- Inter vlan Routing for vlan Account Sales And Marketing.
- Routing Protocol RIP.
- PAT (Port Address Translation).

- Side to Side VPN for Corporate office Router and Technical office Router.
- Access List Control

Access List Rules:-

- Marketing department cannot Ping Sales, Account, Server And Network Admin Departments.
- Noone Can telnet the corporate office router.

Technical Office Network:-

Switching:-

- VLAN
There are also three vlans named as Tech Support, Solution Engg, Software Developers and Network Admin.
- STP
- VTP
- Switch Port Security

Routing:-

- Intervlan Routing for Vlan Tech Support, Solution Engg, Software Developers and Network Admin.

- Routing Protocol RIP
- Side to Side VPN for Technical Office router and Corporate Office Router.
- AAA Security
- Access List Control

ACL Rules:-

- Software developers can not ping Sales, Account, Marketing and Network Admin.
- No one can Telnet Technical office Router.
- Only Network Admin can telnet the Router.
- No one can ping the HTTP server except Network Admin.
- Software Developers, Solution engg And Technical support can not ping each other.

ISP Routers:-

- There are 5 ISP Routers.
- On each Route have to use RIP router protocol.
- One of these router named Backup router has a TFTP server.